

# SELF-SUPPORTING TOWERS



**Beacon Pole, LLC**

*A Monopole Solution Affiliated With J&G Sales, Inc.*

**1-800-842-7622**

[www.b-pole.com](http://www.b-pole.com)

# LM-SERIES

## SELF-SUPPORTING

The LM-Series self-supporting towers offer an easier, safer, most economical and lower cost installation solution. We offer towers made in the USA with solid engineering solutions that match the industry standard. Although, there are several internet tower options on the market, there are three things that make our patented tower unique.

1. **Safety.** Our towers do not require a climber to mount the receiver/antenna. The tower can easily be lowered by the owner, the receiver mounted to the tower, then erected vertically. Once vertical, the tower can be rotated from the ground to dial in the best reception for the receiver. That's the patented part of the design.
2. **Appearance.** There are no ugly supports or guyed wires necessary for anchoring the tower to the ground. Our towers are much more aesthetically appealing than anything else offered on the market. Most other towers either have to be attached to the side of an existing structure, or require 3-4 sets of support wires extending outward from the tower itself. These guy wires require a much larger footprint and substantial foundations to place the tower in any particular area. Our towers require a very limited amount of space.
3. **Most Economical.** For comparable towers of similar height, our towers are significantly less expensive and the installation process is much less complicated allowing for even more savings. The foundation consists of a 12" diameter hole 6 to 7ft deep, poured full with concrete. Setting the foundation and base section of the tower is very similar to setting a large fence post or gate post. Although less complicated, caution is necessary and safety is of utmost importance.

### WHY CLIMB?

**WHEN YOU CAN *TILT* YOUR WAY TO THE TOP!!**



# LM-SERIES

## SELF-SUPPORTING

### GENERAL USE

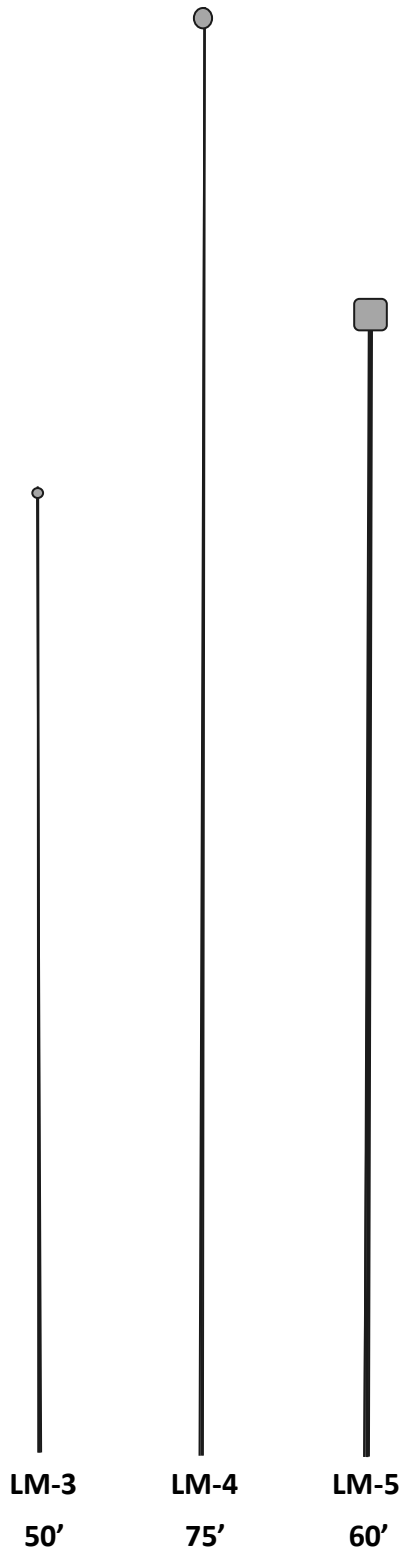
The LM-Series self-supporting towers offer an easier, safer, lower cost and less complicated installation solution. We offer towers made in the USA with solid solutions that meet the industry standard.

### Features

- No Climbing Risk, No Guy Wires, No Supports
- Aesthetically Pleasing With Cables Routed Internally for Protection and Appearance
- Hot-Dip Galvanized Steel For Long Life
- Pre-Engineered Loading Charts for Individual Specs
- Typical Uses Include Small CPE Dishes, MicroPop Applications, Broadband, Security and Two-Way Communication
- LM Series Towers Have a 'Fixed' Base
- Made In The USA

### Kits

- **Tower Kits** Include All Sections and Connection Hardware
  - Up To (5) Sections
  - (2) Cheek Plates & Bolts
  - (1) Toggle & Bolts
  - (1) Strain Relief
  - (2) Grub Bolts
- **Installation Kits** are Available for Those Who do not Already Have the Necessary Tools

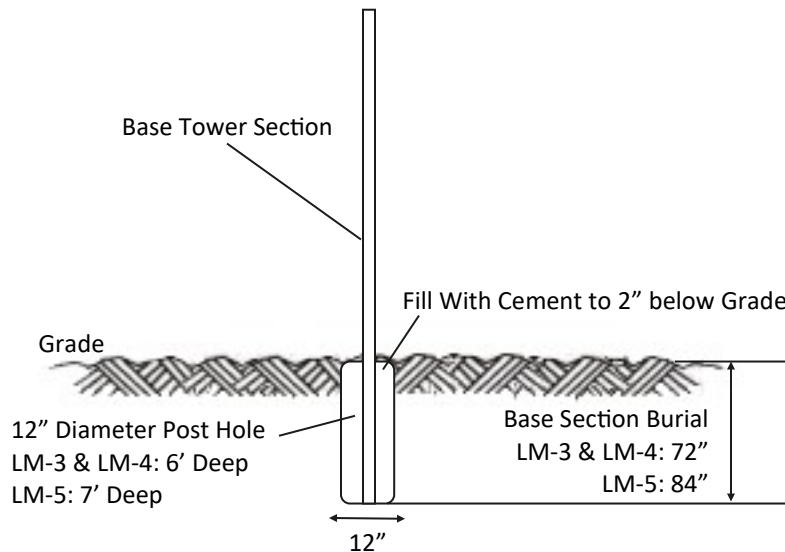


# LM-SERIES

## SELF-SUPPORTING

75 mph Basic Wind Speed Comparable to 90 mph 3-Second Gust			
MODEL	LM-3	LM-4	LM-5 ROBUST
Drilled Hole Diameter	12"	12"	12"
Base Section Burial	72"	72"	84"
Grout to	-2"	-2"	-2"
Max Mast Height	50'	75' / 63'	60'
Max Antenna Load	18" Dish	10" Dish / 18" Dish	4.2 ft <sup>2</sup>
Weight	450 lbs.	550 lbs.	750 lbs.
RETAIL PRICE	ASK FOR PRICE	\$7,333.33	\$10,333.33

### SELF-SUPPORTING LM-SERIES FOUNDATION



### ELEVATION VIEW

### SELF-SUPPORTING TOWER FOUNDATION



# LM-SERIES

## SELF-SUPPORTING

### ALLOWABLE ANTENNA AREAS (SQ. FT.)

Ft <sup>2</sup> @ 70 MPH Fastest Mile Wind Speed – No Ice					
70 MPH Fastest Mile	BEACON POLE	Height	LM-3	LM-4	LM-5
		30'	7.5 *	10 *	14 *
		40'	3.5 *	5.6 *	10 *
		50'	1.8	4	8.2
		60'	1	2.2	5.7
		70'	N/A		*

Ft <sup>2</sup> @ 75 MPH Fastest Mile Wind Speed – No Ice					
75 MPH Fastest Mile	BEACON POLE	Height	LM-3	LM-4	LM-5
		30'	*	*	*
		40'	*	*	*
		50'	2.2	*	*
		60'	1	2.5	4.4
		70'	N/A	1.2	2.7

\* Special Order Only



# LM-SERIES

## SELF-SUPPORTING

### LM SERIES

#### EFFECTIVE PROJECTED AREA (SQ. FT.)

Ft <sup>2</sup> @ 90 MPH 3-Second Gust Wind Speed – No Ice							
90 MPH 3-Second Gust	Height	LM-3		LM-4		LM-5	
		EPA		EPA		EPA	
		Exp B	Exp C	Exp B	Exp C	Exp B	Exp C
	30'	*	*	*	*	*	*
	40'	*	*	*	*	*	*
	50'	2	0.5	-	-	-	-
	60'	0.6		1.3	0.5	5	2.8
70'	-	-	1	-	3	1.4	

**Notes**

- Risk Category - I
- Exposure Categories - B & C
- No Ice Considered
- General Accordance with ANSI/NAAMM FP 1001-07 & Reference to ASCE 7-16
- Foundation Soils: Similar to OSHA Type A
- Transmission Lines: Run Inside Hollow Structure
- \* Special Order







***Beacon Pole, LLC***

***is Affiliated with J&G Sales, Inc.***

Ofc 979.865.4300 | Toll Free 800.842.7622 | Fax 979.865.4303

Ofc Hrs M-F 8am—5pm | Shipping Hrs M-F 9am—4 pm

Physical: 11195 Hwy 159E, Bellville, TX 77418

Mailing: PO Box 547, Bellville, TX 77418

[www.b-pole.com](http://www.b-pole.com) \* [beacon@b-pole.com](mailto:beacon@b-pole.com)